

ISO 6431 STANDARD CYLINDER

SI SERIES

AIRTAC

■ Features

Non-Lube Required

Using TEFLON material bushing, lubrication is non-required.

Adjustable Cushion

Adjustable cushion is in the front and end cover for shock resistance.

High-Temperature Type

High-Temperature type cylinder is optional. The special seals will be adopted to be suitable up to 150°C.

Accessories

All kinds of accessories according to ISO 6431 are available.

Magnetic

Sensor could be used for position the magnetic type cylinder.



■ Symbol



■ Specification

Bore size	mm	32	40	50	63	80	100	125	160	200
Action		Double acting type								
Fluid		Air (be filter by 40μm coalescer)								
Mounting type		Basic	FA	FB	CA	CB	LB	TC	TC-M-1	TC-M-2
Pressure range	bar	1-9.0								
Proof pressure	bar	13.5								
Temperature range	°C	-5-70								
Speed range	mm/s	50-800								
Cushion type		Variable cushion								
Adjustable cushion stroke	mm	24							32	
Port size		1/8"	1/4"		3/8"		1/2"		3/4"	

■ Stroke list

Bore size (mm)	Standard stroke										Max. Stroke	Available Stroke up to											
32	25	50	75	80	100	125	150	160	175	200	250	300	350	400	450	500	1000	2000					
40	25	50	75	80	100	125	150	160	175	200	250	300	350	400	450	500	600	700	800	1200	2000		
50	25	50	75	80	100	125	150	160	175	200	250	300	350	400	450	500	600	700	800	900	1000	1200	2000
63	25	50	75	80	100	125	150	160	175	200	250	300	350	400	450	500	600	700	800	900	1000	1500	2000
80	25	50	75	80	100	125	150	160	175	200	250	300	350	400	450	500	600	700	800	900	1000	1500	2000
100	25	50	75	80	100	125	150	160	175	200	250	300	350	400	450	500	600	700	800	900	1000	1500	2000
125	25	50	75	80	100	125	150	160	175	200	250	300	350	400	450	500	600	700	800	900	1000	1500	2000
160	25	50	75	80	100	125	150	160	175	200	250	300	350	400	450	500	600	700	800	900	1000	1500	2000
200	25	50	75	80	100	125	150	160	175	200	250	300	350	400	450	500	600	700	800	900	1000	1500	2000

Note: Consult us for non-standard stroke

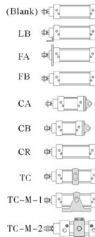
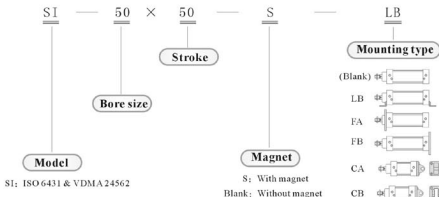


ISO 6431 STANDARD CYLINDER SI SERIES

AIRTAC

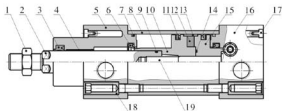
SI
SI

Ordering code

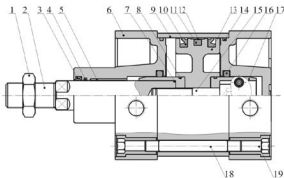


Inner structure

32-100 With magnet



125-200 With magnet



※ Please refer to Page 12-16 for accessory parts.

NO.	Item	NO.	Item
1	Rod nut	2	Piston rod
3	Rod packing	4	Bushing
5	Front	6	Cushion O-ring
7	Barrel gasket	8	Barrel
9	Rod O-ring	10	Magnet holder
11	Magnet holder O-ring	12	Magnet
13	Wearing	14	Pilot O-ring
15	Pilot body	16	Back
17	Plastic cover	18	Tie-rod nut
19	Screw		

Bore size 32 is without plastic cover in the front and back cover.

NO.	Item	NO.	Item
1	Rod nut	2	Piston rod
3	Rod packing	4	Front cover O-ring
5	Bushing	6	Front
7	Rod O-ring	8	Cushion body O-ring
9	Barrel	10	Piston O-ring
11	Magnet	12	Wearing ring
13	Piston	14	Barrel gasket
15	Screw	16	Cushion O-ring
17	Cushion	18	Tie-rod
19	Tie-rod nut		

ISO 6431 STANDARD CYLINDER

AIRTAC

SI SERIES

Material of major parts

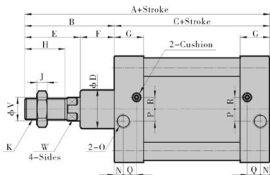
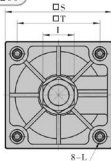
Bore size(mm)	32	40	50	63	80	100	125	160	200	Bore size(mm)	32	40	50	63	80	100	125	160	200
Barrel	Aluminum alloy									Cushion gasket	NBR								
Piston	Aluminum alloy									Wearing ring	TEFLON								
Rod	Carbon steel with 20 μ chrome plated									Bushing	TEFLON								
Rod packing	NBR									Front cover	Aluminum alloy								
Rod O-ring	NBR									Back cover	Aluminum alloy								
Cushion body O-ring	NBR									Magnet	Plastic								
Rod O-ring	NBR									Cushion body	Copper								
Barrel gasket	NBR									Cushion patch	Carbon steel								
Cushion O-ring	NBR									Cushion needle	Copper with nickel plated								

O-ring list

Bore size/Quantity	Rod packing	Piston O-ring	Tube gasket	Rod gasket	Cushion body O-ring	Cushion packing	Cushion gasket
32	G1097	G1119	27.5 x 2.0	1.3 x 9.2	-	G1062	1.5 x 5.5
40	G1098	G1120	34.5 x 2.0	1.5 x 12.7	-	G1063	1.5 x 5.5
50	G1099	G1121	45.5 x 2.0	1.5 x 16.7	-	G1064	1.5 x 5.5
63	G1099	G1122	55.5 x 2.0	1.5 x 16.7	-	G1064	1.5 x 5.5
80	G1100	G1123	74.5 x 2.0	2.4 x 19.8	-	G1065	1.5 x 5.5
100	G1100	G1124	94.5 x 2.0	2.4 x 19.8	-	G1065	1.5 x 5.5
125	G1101	G1125	118 x 3.55	2.0 x 27.5	2.0 x 35.5	G1128	1.5 x 5.5
160	G1102	G1126	150 x 5.3	2.0 x 35.5	2.0 x 45.5	G1129	1.5 x 9
200	G1102	G1127	190 x 5.3	2.0 x 35.5	2.0 x 45.5	G1129	1.5 x 9

Dimensions

$\phi 32-\phi 200$



Bore size/Item	A	B	C	D	E	F	G	H	I	J	K	L
32	142	48	94	30	28	20	27.5	22	17	6	M10 x 1.25	M6
40	159	54	105	35	34	22	32	24	19	7	M12 x 1.25	M6
50	175	69	106	40	42	27	31	32	24	8	M16 x 1.5	M8
63	190	69	121	45	40	29	33	32	24	8	M16 x 1.5	M8
80	214	86	128	45	53	33	33	40	30	10	M20 x 1.5	M10
100	229	91	138	55	55	36	37	40	30	10	M20 x 1.5	M10
125	279	119	160	60	74	45	46	54	41	13.5	M27 x 2	M12
160	332	152	180	65	94	58	50	72	55	18	M36 x 2	M16
200	347	167	180	75	100	67	50	72	55	18	M36 x 2	M16

Bore size/Item	N	O	P	Q	R	S	T	V	W
32	13.5	1/8"	4	7.5	7	47	32.5	12	10
40	16	1/4"	6	8.5	9	53	38	16	13
50	18.5	1/4"	8.5	7.5	7.5	65	46.5	20	17
63	19	3/8"	7.5	8.5	9	75	56.5	20	17
80	19	3/8"	11	8.5	13.5	95	72	25	22
100	18	1/2"	13.5	9.5	14.5	115	89	25	22
125	23	1/2"	14	12	14	140	110	32	27
160	25	3/4"	15	12	20	180	140	40	36
200	25	3/4"	15	12	20	220	175	40	36

* The dimensions of magnet type cylinder are exactly the same as non-magnet type cylinder.

ISO 6431 STANDARD CYLINDER

SID SERIES

AIRTAC

SI

SID



Symbol



Specification

Bore size	mm	32	40	50	63	80	100	125	160	200
Action		Double acting type								
Fluid		Air (be filter by 40µm colander)								
Mounting type		Basic		FA	LB	TC	TC-M-1	TC-M-2		
Pressure range	bar	1-9.0								
Proof pressure	bar	13.5								
Temperature range	°C	-5-70								
Speed range	mm/s	30-800								
Cushion type		Variable cushion								
Port size		1/8"	1/4"	3/8"			1/2"	3/4"		

Stroke list

Bore size (mm)	Standard stroke																Max. Stroke	Available Stroke (µm)					
32	25	50	75	80	100	125	150	160	175	200	250	300	350	400	450	500	1000	2000					
40	25	50	75	80	100	125	150	160	175	200	250	300	350	400	450	500	600	700	800	1200	2000		
50	25	50	75	80	100	125	150	160	175	200	250	300	350	400	450	500	600	700	800	900	1000	1200	2000
63	25	50	75	80	100	125	150	160	175	200	250	300	350	400	450	500	600	700	800	900	1000	1500	2000
80	25	50	75	80	100	125	150	160	175	200	250	300	350	400	450	500	600	700	800	900	1000	1500	2000
100	25	50	75	80	100	125	150	160	175	200	250	300	350	400	450	500	600	700	800	900	1000	1500	2000
125	25	50	75	80	100	125	150	160	175	200	250	300	350	400	450	500	600	700	800	900	1000	1500	2000
160	25	50	75	80	100	125	150	160	175	200	250	300	350	400	450	500	600	700	800	900	1000	1500	2000
200	25	50	75	80	100	125	150	160	175	200	250	300	350	400	450	500	600	700	800	900	1000	1500	2000

Note: Consult us for non-standard stroke



Features

Non-Lube Required

Using TEFLON material bushing, lubrication is non-required.

Adjustable Cushion

Adjustable cushion is in the front and end cover for shock resistance.

High-Temperature Type

High-Temperature type cylinder is optional. The special seals will be adopted to be suitable up to 150°C.

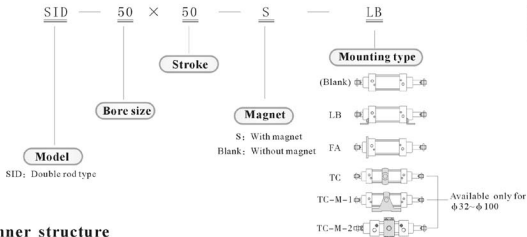
Accessories

All kinds of accessories according to ISO 6431 are available.

Magnetic

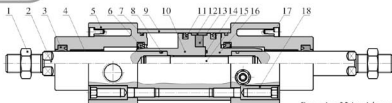
Sensor could be used for position the magnetic type cylinder.

Ordering code



Inner structure

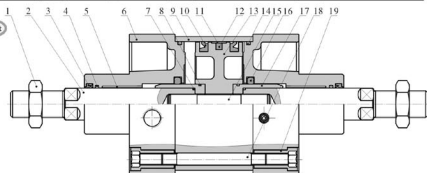
32~100 With magnet



Bore size 32 is without plastic cover.

NO.	Item	NO.	Item	NO.	Item	NO.	Item
1	Rod nut	2	Piston rod	3	Rod packing	4	Bushing
5	Front	6	Cushion O-ring	7	Barrel gasket	8	Red O-ring
9	Barrel	10	Magnet holder	11	Magnet holder O-ring	12	Wearing
13	Magnet	14	Pilot O-ring	15	Screw	16	Pilot body
17	Cover	18	Screw				

125~200 With magnet



NO.	Item	NO.	Item	NO.	Item	NO.	Item
1	Rod nut	2	Piston rod	3	Rod packing	4	Front cover O-ring
5	Bushing	6	Front cover	7	Red O-ring	8	Cushion body O-ring
9	Barrel	10	Piston O-ring	11	Wearing ring	12	Magnet
13	Piston	14	Barrel gasket	15	Screw	16	Cushion O-ring
17	Cushion	18	Tie-rod	19	Tie-rod nut		

ISO 6431 STANDARD CYLINDER

SID SERIES

Material of major parts

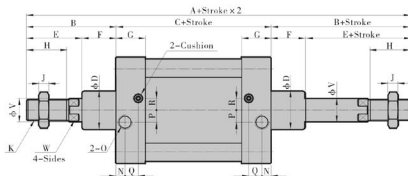
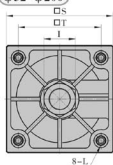
Bore size(mm)	32	40	50	63	80	100	125	160	200	Bore size(mm)	32	40	50	63	80	100	125	160	200
Barrel	Aluminum alloy									Cushion gasket	NBR								
Piston	Aluminum alloy									Wearing ring	TEFLON								
Rod	Carbon steel with 20μ chrome plated									Bushing	TEFLON								
Rod packing	NBR									Front cover	Aluminum alloy								
Rod O-ring	NBR									Magnet	Plastic								
Cushion/body O-ring	NBR									Cushion body	Copper								
Rod O-ring	NBR									Cushion patch	carbon steel								
Barrel gasket	NBR									Cushion needle	Copper with nickel plated								
O-ring O-ring	NBR																		

O-ring list

Bore size/Quantity	Rod packing	Piston O-ring	Tube gasket	Rod gasket	Cushion body O-ring	Cushion packing	Cushion gasket
32	G1097	G1119	27.5 × 2.0	1.3 × 9.2	-	G1062	1.5 × 5.5
40	G1098	G1120	34.5 × 2.0	1.5 × 12.7	-	G1063	1.5 × 5.5
50	G1099	G1121	45.5 × 2.0	1.5 × 16.7	-	G1064	1.5 × 5.5
63	G1099	G1122	55.5 × 2.0	1.5 × 16.7	-	G1064	1.5 × 5.5
80	G1100	G1123	74.5 × 2.0	2.4 × 19.8	-	G1065	1.5 × 5.5
100	G1100	G1124	94.5 × 2.0	2.4 × 19.8	-	G1065	1.5 × 5.5
125	G1101	G1125	118 × 3.55	2.0 × 27.5	2.0 × 35.5	G1128	1.5 × 5.5
160	G1102	G1126	150 × 5.3	2.0 × 35.5	2.0 × 45.5	G1129	1.5 × 9
200	G1102	G1127	190 × 5.3	2.0 × 35.5	2.0 × 45.5	G1129	1.5 × 9

Dimensions

Φ32-Φ200



Bore size/Item	A	B	C	D	E	F	G	H	I	J	K	L
32	190	48	94	30	28	20	27.5	22	17	6	M10 × 1.25	M6
40	213	54	105	35	32	22	32	24	19	7	M12 × 1.25	M6
50	244	69	106	40	42	27	31	32	24	8	M16 × 1.5	M8
63	259	69	121	45	40	29	33	32	24	8	M16 × 1.5	M8
80	300	86	128	45	53	33	33	40	30	10	M20 × 1.5	M10
100	320	91	138	55	55	36	37	40	30	10	M20 × 1.5	M10
125	398	119	160	60	74	45	46	54	41	13.5	M27 × 2	M12
160	484	152	180	65	94	58	50	72	55	18	M36 × 2	M16
200	514	167	180	75	100	67	50	72	55	18	M36 × 2	M16

Bore size/Item	N	O	P	Q	R	S	T	Y	W
32	13.5	1/8"	4	7.5	7	47	32.5	12	10
40	16	1/4"	6	8.5	9	53	38	16	13
50	15.5	1/4"	7.5	8.5	8.5	65	46.5	20	17
63	16.5	3/8"	7.5	8.5	9	75	56.5	20	17
80	16.5	3/8"	11	8.5	13.5	95	72	25	22
100	18.5	1/2"	13.5	9.5	14.5	115	89	25	22
125	23	1/2"	14	12	14	140	110	32	27
160	25	3/4"	15	12	20	180	140	40	36
200	25	3/4"	15	12	20	220	175	40	36

* The dimensions of magnet type cylinder are exactly the same as non-magnet type cylinder.

ISO 6431 STANDARD CYLINDER

SIJ SERIES

AIRTAC

Features

Non-Lube Required

Using TEFLON material bushing, lubrication is non-required.

Adjustable Cushion

Adjustable cushion is in the front and end cover for shock resistance.

High-Temperature Type

High-Temperature type cylinder is optional. The special seals will be adopted to be suitable up to 150°C.

Accessories

All kinds of accessories according to ISO 6431 are available.

Magnetic

Sensor could be used for position the magnetic type cylinder.

Stroke Adjustable

Using adjustable stroke nut, the variable stroke could be chose.



Symbol



Specification

Bore size	mm	32	40	50	63	80	100	125	160	200	
Action		Double acting type									
Fluid		Air (be filter by 40µm colander)									
Mounting type		Basic		LB	TC	TC-M-1		TC-M-2			
Pressure range	bar	1-9.0									
Proof pressure	bar	13.5									
Temperature range	°C	-5-70									
Speed range	mm/s	30-800									
Cushion type		Variable cushion									
Port size		1/8"		1/4"		3/8"		1/2"		3/4"	

Stroke list

Bore size (mm)	Standard stroke										Max. Stroke	Available Stroke up to											
32	25	50	75	80	100	125	150	160	175	200	250	300	350	400	450	500	1000	2000					
40	25	50	75	80	100	125	150	160	175	200	250	300	350	400	450	500	600	700	800	1200	2000		
50	25	50	75	80	100	125	150	160	175	200	250	300	350	400	450	500	600	700	800	900	1000	1200	2000
63	25	50	75	80	100	125	150	160	175	200	250	300	350	400	450	500	600	700	800	900	1000	1500	2000
80	25	50	75	80	100	125	150	160	175	200	250	300	350	400	450	500	600	700	800	900	1000	1500	2000
100	25	50	75	80	100	125	150	160	175	200	250	300	350	400	450	500	600	700	800	900	1000	1500	2000
125	25	50	75	80	100	125	150	160	175	200	250	300	350	400	450	500	600	700	800	900	1000	1500	2000
160	25	50	75	80	100	125	150	160	175	200	250	300	350	400	450	500	600	700	800	900	1000	1500	2000
200	25	50	75	80	100	125	150	160	175	200	250	300	350	400	450	500	600	700	800	900	1000	1500	2000

Note: Consult us for non-standard stroke

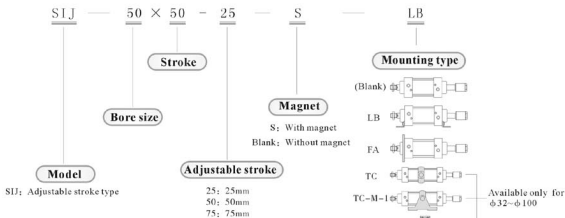


ISO 6431 STANDARD CYLINDER SIJ SERIES

AIRTAC

SI
SIJ

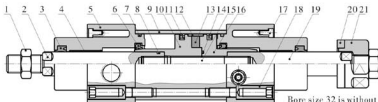
Ordering code



Inner structure

* Please refer to Page12~16 for accessory parts.

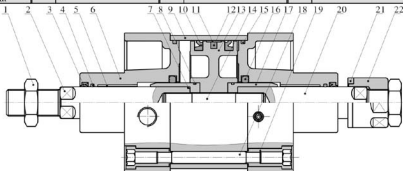
32~100 With magnet



Bore size 32 is without plastic cover.

NO.	Item	NO.	Item	NO.	Item	NO.	Item
1	Rod nut	2	Rod 1	3	Rod packing	4	Bushing
5	Front cover	6	Cushion body O-ring	7	Barrel gasket	8	Rod O-ring
9	Barrel	10	Magnet holder	11	Magnet holder O-ring	12	Wearing
13	Magnet	14	Pilot O-ring	15	Screw	16	Pilot body
17	Cover	18	Screw	19	Rod 2	20	Bumper
21	Adjustable nut						

125~200 With magnet



NO.	Item	NO.	Item	NO.	Item	NO.	Item
1	Rod nut	2	Rod 1	3	Rod packing	4	Front cover O-ring
5	Bushing	6	Front cover	7	Rod O-ring	8	Cushion body O-ring
9	Barrel	10	Magnet holder O-ring	11	Wearing	12	Magnet
13	Piston	14	Screw	15	Barrel gasket	16	Cushion O-ring
17	Cushion	18	Tie-rod	19	Tie-rod nut	20	Rod 2
21	Bumper	22	Adjustable nut				

ISO 6431 STANDARD CYLINDER

AIRTAC

SIJ SERIES

Material of major parts

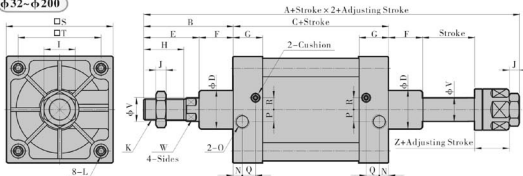
Bore size(mm)	32	40	50	63	80	100	125	160	200	Bore size(mm)	32	40	50	63	80	100	125	160	200
Barrel	Aluminum alloy									Cushion gasket	NBR								
Piston	Aluminum alloy									Wearing ring	TEFLON								
Rod	Carbon steel with 20 μ m chrome plated									Bushing	TEFLON								
Rod packing	NBR									Front cover	Aluminum alloy								
Rod O-ring	NBR									Magnet	Plastic								
Carbon body O-ring	NBR									Cushion body	Copper								
Rod O-ring	NBR									Cushion patch	Carbon steel								
Barrel gasket	NBR									Cushion needle	Copper with nickel plated								
Cushion O-ring	NBR									Adjusting nut	Carbon steel								

O-ring list

Bore size/Quantity	Rod packing	Piston O-ring	Tube gasket	Rod gasket	Cushion body O-ring	Cushion packing	Cushion gasket
32	G1097	G1119	27.5 × 2.0	1.3 × 9.2	-	G1062	1.5 × 5.5
40	G1098	G1120	34.5 × 2.0	1.5 × 12.7	-	G1063	1.5 × 5.5
50	G1099	G1121	45.5 × 2.0	1.5 × 16.7	-	G1064	1.5 × 5.5
63	G1099	G1122	55.5 × 2.0	1.5 × 16.7	-	G1064	1.5 × 5.5
80	G1100	G1123	74.5 × 2.0	2.4 × 19.8	-	G1065	1.5 × 5.5
100	G1100	G1124	94.5 × 2.0	2.4 × 19.8	-	G1065	1.5 × 5.5
125	G1101	G1125	118 × 3.55	2.0 × 27.5	2.0 × 35.5	G1128	1.5 × 5.5
160	G1102	G1126	150 × 5.3	2.0 × 35.5	2.0 × 45.5	G1129	1.5 × 9
200	G1102	G1127	190 × 5.3	2.0 × 35.5	2.0 × 45.5	G1129	1.5 × 9

Dimensions

φ32~φ200



Bore size/Item	A	B	C	D	E	F	G	H	I	J	K	L
32	189	48	94	30	28	20	27.5	22	17	6	M10 × 1.25	M6
40	209	54	105	35	32	22	32	24	19	7	M12 × 1.25	M6
50	234	69	106	40	42	27	31	32	24	8	M16 × 1.5	M8
63	250	69	121	45	40	29	33	32	24	8	M16 × 1.5	M8
80	286	86	128	45	53	33	33	40	30	10	M20 × 1.5	M10
100	304	91	138	55	55	36	37	40	30	10	M20 × 1.5	M10
125	378	119	160	60	74	45	46	54	41	13.5	M27 × 2	M12
160	458	152	180	65	94	58	50	72	55	18	M36 × 2	M16
200	486	167	180	75	100	67	50	72	55	18	M36 × 2	M16

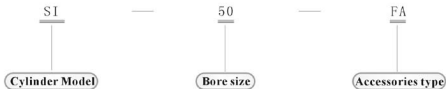
Bore size/Item	N	O	P	Q	R	S	T	V	W	Z
32	13.5	1/8"	4.5	6.5	6.5	47	32.5	12	10	27
40	16	1/4"	6	8.5	9	53	38	16	13	28
50	15.5	1/4"	8.5	7.5	7.5	65	46.5	20	17	31
63	16.5	3/8"	7.5	8.5	9	75	56.5	20	17	31
80	16.5	3/8"	11	8.5	13.5	95	72	25	22	39
100	18.5	1/2"	13.5	9.5	14.5	115	89	25	22	39
125	23	1/2"	14	12	14	140	110	32	27	54
160	25	3/4"	15	12	20	180	140	40	36	68
200	25	3/4"	15	12	20	220	175	40	36	72

※ The dimensions of magnet type cylinder are exactly the same as non-magnet type cylinder.

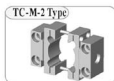
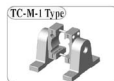
SI

Acoustic

Ordering code



Accessories



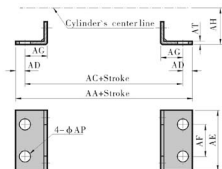
Accessories for choosing list

Cylinder/Accessories	LB	FA	FB	CA	CB	TC	TC-M-1	TC-M-2
SI	●	●	●	●	●	●	●	●
SID	●	●	×	×	×	●	●	●
SU	●	●	×	×	×	●	●	●

ISO 6431 STANDARD CYLINDER ACCESSORIES

AIRTAC

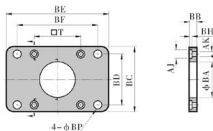
LB Type



Item/Item size	32	40	50	63	80	100	125	160	200
AA	158	179	190	209	248	266	290	340	380
AG	142	161	170	185	210	228	250	300	320
AD	8	9	10	12	19	19	20	20	20
AE	47	53	65	75	95	115	140	180	220
AF	32	36	45	50	63	75	90	115	135
AG	24	28	32	32	41	45	45	60	70
AH	32	36	45	50	63	71	90	115	135
AP	7	9	9	9	12.5	14.5	16.5	18.5	24
AT	3	3	3	3	4	4	8	8	9

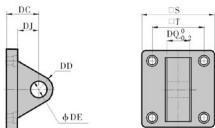
FA Type

FB Type



Item/Item size	32	40	50	63	80	100	125	160	200
AJ	11	11	14	14	17	17	19	25	25
AK	6.5	6.5	9	9	11	11	13	17	17
BA	30.5	35.5	40.5	45.5	55.5	55.5	60.5	65.5	75.5
BB	10	10	12	12	16	16	20	20	25
BC	47	53	65	75	95	115	140	180	220
BD	32	36	45	50	63	75	90	115	135
BE	80	90	110	125	154	186	224	280	320
BF	64	72	90	100	126	150	180	230	270
BH	6.5	6.5	8.5	8.5	10.5	10.5	12.5	13	17.5
BP	7	9	9	9	12.5	14.5	16.5	18.5	24
T	32.5	38	46.5	56.5	72	89	110	140	175

CA Type

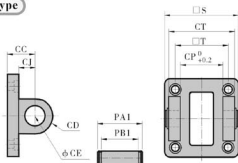


Item/Item Size	32	40	50	63	80	100	125	160	200
S	47	53	65	75	95	115	140	180	220
T	32.5	38	46.5	56.5	72	89	110	140	175
DC	22	25	27	32	36	41	50	55	60
DD	9	12	12	15	15	20	25	30	30
DE	10	12	12	16	16	20	25	30	30
DJ	13	16	17	22	22	27	33	35.5	37
DQ	25.8	27.8	31.7	39.7	49.7	59.7	69.7	89.7	89.7



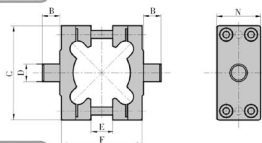
ISO 6431 STANDARD CYLINDER ACCESSORIES

CB Type



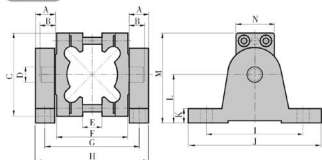
Item/Bore size	32	40	50	63	80	100	125	160	200
CC	22	25	27	32	36	41	50	55	60
CD	9	12	12	15	15	20	25	30	30
CE	10	12	12	16	16	20	25	30	30
CJ	13	16	17	22	22	27	31	35.5	36
CP	26	28	32	40	50	60	70	90	90
CT	45	52	60	70	90	110	130	170	170
PA1	51	59	67	77	97	119	139	181	181
PB1	45.5	52.5	60.5	70.5	90.5	110.5	130.5	170.5	170.5
S	47	53	65	75	95	115	140	180	220
T	32.5	38	46.5	56.5	72	89	110	140	175

TC Type



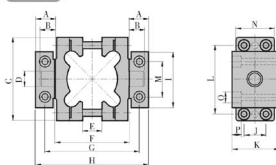
Item/Bore size	32	40	50	63	80	100	125	160	200
B	12	16	16	20	20	25	-	-	-
C	64.5	72	84	98	120	140	-	-	-
D	φ12	φ16	φ16	φ20	φ20	φ25	-	-	-
E	15	22	20	33	40	59	-	-	-
F	57	63	75	90	110	132	-	-	-
N	30	32	34	41	44	44	-	-	-

TC-M-1 Type



Item/Bore size	32	40	50	63	80	100	125	160	200
A	16	23	23	23	23	23	-	-	-
B	12	16	16	20	20	25	-	-	-
C	64.5	72	84	120	120	140	-	-	-
D	φ12	φ16	φ16	φ20	φ20	φ25	-	-	-
E	15	22	20	40	40	59	-	-	-
F	57	63	75	90	110	132	-	-	-
G	73	86	98	113	133	155	-	-	-
H	89	109	121	156	156	178	-	-	-
I	80	80	80	80	85	85	-	-	-
J	110	110	110	110	120	120	-	-	-
K	12	12	12	12	12	12	-	-	-
L	40	54	54	54	75	75	-	-	-
M	72	90	96	136	136	145	-	-	-
N	30	32	34	44	44	44	-	-	-

TC-M-2 Type



Item/Bore size	32	40	50	63	80	100	125	160	200
A	14	21	21	23	23	23	28.5	-	-
B	12	16	16	20	20	25	-	-	-
C	64.5	72	84	98	120	140	-	-	-
D	φ12	φ16	φ16	φ20	φ20	φ25	-	-	-
E	15	22	20	33	40	59	-	-	-
F	57	63	75	90	110	132	-	-	-
G	71	87	99	116	136	164	-	-	-
H	85	105	117	136	156	189	-	-	-
I	46	55	55	65	65	65	-	-	-
J	17	18.5	20	24	26	26	-	-	-
K	30	36	36	40	44	50	-	-	-
L	52	57.5	68	81	103	119	-	-	-
N	30	32	34	41	44	44	-	-	-
M	32	36	36	42	42	50	-	-	-
O	11	15	15	18	18	18	-	-	-
P	6.8	9	9	11	11	13	-	-	-

Ordering code



Material of joints

Y Knuckle	Carbon steel
I Knuckle	Carbon steel
Floating joint	Carbon steel
Universal joint	Carbon steel

I: I Knuckle
 Y: Y Knuckle
 F: Floating joint
 U: Universal joint

Rod clevis

I Knuckle



Y Knuckle



Floating joint



Universal joint



Accessories for choosing list

Accessories\Cylinder	SI Series	SID Series	SIJ Series
I Knuckle	●	●	●
Y Knuckle	●	●	●
Universal joint	●	●	●
Floating joint	●	●	●

SI

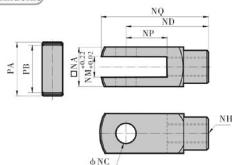
Accessories

ISO 6431 STANDARD CYLINDER

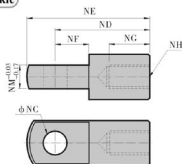
ACCESSORIES

■ Dimensions

Y Knuckle

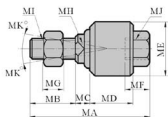


I Knuckle



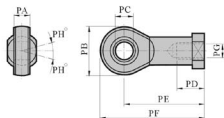
Bore size/Item	NA	NC	ND	NE	NF	NG	NH	NM	NP	NO	PA	PB
32	19	10	40	52	15	20	M10 × 1.25	10	20	52	26.2	20
40	25.4	12	48	67	24	20	M12 × 1.25	12	24	62	32.8	26.5
50	32	16	64	89	32	23	M16 × 1.5	16	32	83	39.3	33
63	32	16	64	89	32	23	M16 × 1.5	16	32	83	39.3	33
80	44.4	20	80	112	40	30	M20 × 1.5	20	40	105	53.3	45
100	44.4	20	80	112	40	30	M20 × 1.5	20	40	105	53.3	45
125	54	30	110	155	40	45	M27 × 2.0	30	55	151.8	66	55
160	70	35	144	195	65	55	M36 × 2.0	35	73	195.8	83	71
200	70	35	144	195	65	55	M36 × 2.0	35	73	195.8	83	71

Floating Joint



Bore size/Item	MA	MB	MC	MD	ME	MF	MG	MH	MI	MI	MK
32	58	22	7	21	26	11.5	7	10	M10 × 1.25	M10 × 1.25	12
40	58	22	8	21	28	11.5	8	12	M12 × 1.25	M12 × 1.25	12
50	90	27	10	41	44.5	20	10	17	M16 × 1.5	M16 × 1.5	7
63	90	27	10	41	44.5	20	10	17	M16 × 1.5	M16 × 1.5	7
80	102	29	13	46	53	24	13	22	M20 × 1.5	M20 × 1.5	10
100	102	29	13	46	53	24	13	22	M20 × 1.5	M20 × 1.5	10
125	147	54	13	64	62	39	14	30	M27 × 2.0	M27 × 2.0	9
160	251	72	22	115	80	80	18	36	M36 × 2.0	M36 × 2.0	4
200	251	72	22	115	80	80	18	36	M36 × 2.0	M36 × 2.0	4

Universal (Fish eye) Joint



Bore size/Item	PA	PB	PC	PD	PE	PF	PG	PH
32	11	26	10	21	43	56	M10 × 1.25	13
40	12	30	12	24	50	65	M12 × 1.25	13
50	15	38	16	33	64	83	M16 × 1.5	15
63	15	38	16	33	64	83	M16 × 1.5	15
80	18	46	20	40	77	100	M20 × 1.5	15
100	18	46	20	40	77	100	M20 × 1.5	15
125	37	70	30	51	110	145	M27 × 2.0	15
160	43	80	35	56	125	165	M36 × 2.0	16
200	43	80	35	56	125	165	M36 × 2.0	16