



ILLUMINATED PUSHBUTTON SWITCH

KH-2204 Series**CLASSIFICATION****KH-2204 L P - 1 1 1 R**

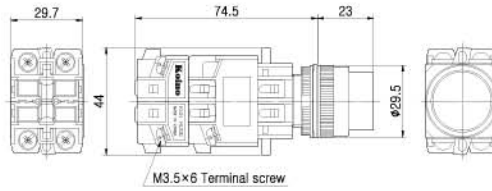
① ② ③ ④ ⑤ ⑥

① LAMP	NONE	FILAMENT LAMP
	L	LED LAMP
② ACTUATOR	NONE	MOMENTARY
	AT	MAINTAINED
	P	MOMENTARY/PROTECTIVE RING
	AP	MAINTAINED/PROTECTIVE RING
	EB	MOMENTARY/MUSHROOM HEAD
	ER	MAINTAINED/TURN-TO-RESET/MUSHROOM HEAD
③ INPUT VOLTAGE	1	110VAC 50/60Hz
	2	220VAC 50/60Hz
	3	230VAC 50/60Hz
	TL	6, 12, 24 AC/DC
④ CONTACT	NUMBER OF NO CONTACT	
⑤ CONTACT	NUMBER OF NC CONTACT	
⑥ COLOR	R	RED
	G	GREEN
	Y	YELLOW
	B	BLUE
	MW	MILKY WHITE
	W	WHITE
	BK	BLACK

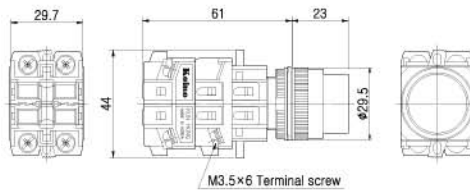
CONTROL COMPONENT



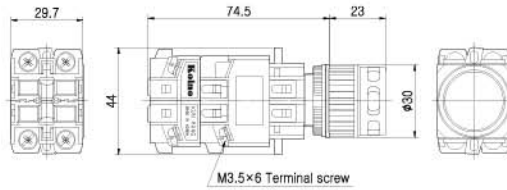
KH-2204



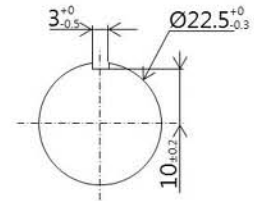
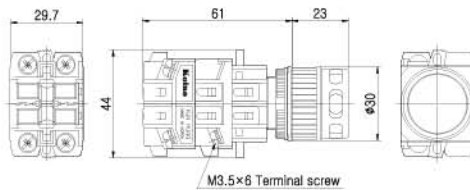
KH-2204-TL



KH-2204P



KH-2204P-TL



Panel Cut

CONTROL COMPONENTS

SQUARE LIGHT

TOWER LIGHT

MICRO SWITCH

FOOT SWITCH

LIMIT SWITCH

POWER SWITCH

HOIST SWITCH

CAM SWITCH

BUZZER

PHOTO SENSOR

PROXIMITY SENSOR

FLOATLESS LEVEL SWITCH

TIMER & COUNTER

RELAY

SOCKETS

TERMINAL BLOCK

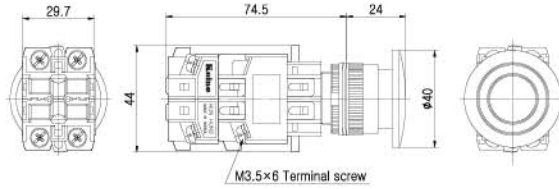
CONTROL BOX

PID TEMP. CONTROLLER

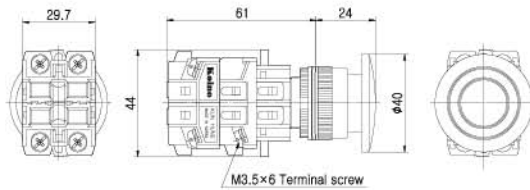
CONTROL COMPONENT



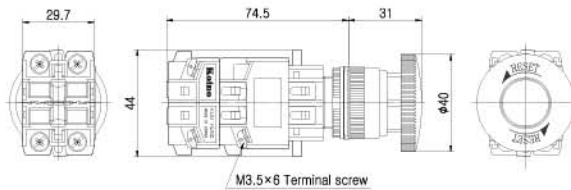
KH-2204EB



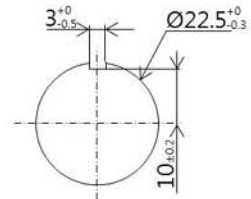
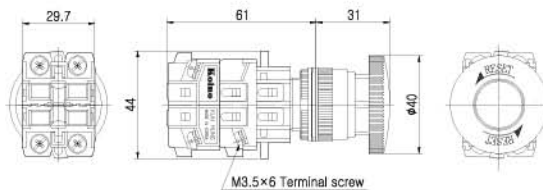
KH-2204EB-TL



KH-2204ER



KH-2204ER-TL



Panel Cut



Technical Information

Switching System

The switching element of KH-2201 is equipped with normally open contact and normally closed contact.

1A, 1B, 2A, 2B 1A1B, 2A2B 3A1B and 1A3B contacts are available. Normally 4 contact blocks can be assembled

Material

Contact

Silver alloy + Copper

Housing

BODY: Nylon glass

CONTACT HOUSING: Nylon glass

Buttons

Acetal

Mechanical Characteristics

Mechanical Lifetime

Momentary and maintained : 1,000,000 Cycles of operation

EB and ER type: 100,000 Cycles of operation

Electrical Characteristics

Standards

This product comply with “ Standards for low-voltage switching devices” EN IEC 60947-5-1

Contact Ratings

125VAC 10A, 250VAC 6A (resistive load)

Insulation Resistance

Minimum 100M Ω (500VDC)

Contact Resistance

Maximum 30m Ω

Electrical Lifetime

100,000 cycles of operation

CONTROL COMPONENTS

SQUARE LIGHT

TOWER LIGHT

MICRO SWITCH

FOOT SWITCH

LIMIT SWITCH

POWER SWITCH

HOIST SWITCH

CAM SWITCH

BUZZER

PHOTO SENSOR

PROXIMITY SENSOR

FLOATLESS LEVEL SWITCH

TIMER & COUNTER

RELAY

SOCKETS

TERMINAL BLOCK

CONTROL BOX

PID TEMP. CONTROLLER



Electrical Characteristics—continues

Dielectric Strength

Between Live Parts: 1,500VAC(50/60Hz) for 1 minute

Between Live and Dead Parts: 1,500VAC(50/60Hz) for 1 minute

Environmental conditions

Operational Temperature

-15°C~+50°C

Operational Humidity

45~85%RH

Protection Degree

IP56

ER type: IP50

Shock Resistance

Approximately 50G

Vibration Resistance

10~55Hz double amplitude 1.5mm (at X, Y and Z axis)

Approvals

Approbations

UL, CCC, KC

Declaration of Conformity

CE