

**NOTE:**

1 NAMEPLATE/LABEL TO READ LEFT TO RIGHT FROM REAR OF MOTOR.

MOTOR SPECIFICATIONS ARE AT 25°C UNLESS OTHERWISE NOTED

1. MOTOR Kt: 0.08 ±10% N-M/A.
2. MOTOR Ke: 7.25-8.86 V/KRPM WITHIN 200mV CW TO CCW.
3. MOTOR TERMINAL RESISTANCE: 1.84-2.50 OHMS AT 4 A.
4. MAXIMUM TERMINAL VOLTAGE: 48 V.
5. MAXIMUM CONTINUOUS SPEED: 600 RAD/S (NO LOAD).
6. MAXIMUM PEAK TORQUE: 1.7 N-M.
7. MAXIMUM PEAK CURRENT: 24.5 A.
8. MAXIMUM CONTINUOUS STALL TORQUE: 0.22 N-M.
9. MAXIMUM CONTINUOUS CURRENT: 3.1 A.
10. ELECTRICAL TIME CONSTANT: 1.78 mSEC.
11. MECHANICAL TIME CONSTANT: 13.48 mSEC.
12. MOTOR INDUCTANCE: 3.9 mH.
13. MOTOR INERTIA: 0.00004 Kg-M<sup>2</sup>.
14. STATIC FRICTION TORQUE: 0.021 N-M MAX.
15. ROTATIONAL LOSSES: 0.004 N-M/RAD/S.
16. NO LOAD CURRENT AT 25 V: 0.60 A MAX.
17. MAXIMUM WINDING TEMP 155°C.
18. THERMAL RESISTANCE ARMATURE TO AMBIENT: 5.00°C/W,  
MOUNTED ON: 254 mm X 254 mm X 6.35 mm HEATSINK.
19. THERMAL STABILITY OF MOTOR TORQUE CONSTANT: -0.2%/°C.
20. DIELECTRIC BREAKDOWN OF MOTOR ARMATURE TO GROUND: 600 V AT 60 Hz FOR 1 SECOND.
21. SHAFT END PLAY: 0.254 mm MAX IN DIRECTION "A" WITH A 4.54 Kg LOAD.  
(SEE FIGURE 1) 0.025 mm MAX IN DIRECTION "B" WITH A 4.54 Kg LOAD.
22. TACH Ke: 0.12-0.15 V/RAD/S WITHIN 100 mV CW TO CCW.
23. TACH RESISTANCE: 600-800 OHMS.
24. TACH RIPPLE (SEE FIGURE 2): 700 mV PEAK TO PEAK AT 104.72 RAD/S WITH LOAD MOMENT OF INERTIA.
25. MOTOR AND TACH WEIGHT: 2.27 Kg.

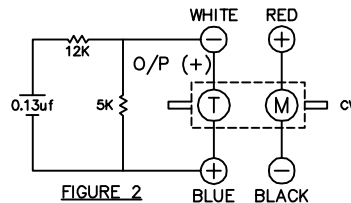


FIGURE 2

\* DETERMINED WHEN NAMEPLATE IS PRINTED.  
\*\* DENOTES REVISION LEVEL OF ASSEMBLY.

 www.electrocraft.com 250 McCormick Road Gallipolis, OH 45631 U.S.A.		MODEL NO.	REVISION
		S286-1A\T8	**
SERIAL NO. * DATE CODE *		PART NO.	CUSTOMER PART NO.
		0286-34-014	

NAMEPLATE DETAIL

17	1025247	2-5-07
P	62270	11-20-03
N	60543	11-9-00
M	59226	6-8-99
L	58367	7-17-98
K	57477	11-5-97
J	56823	6-6-97
REV	ECN No.	DATE

DO NOT SCALE DRAWING UNLESS OTHERWISE SPECIFIED.	DWN BY	DATE	SCALE	TYPE	CONFIDENTIAL INFORMATION OF ELECTROCRAFT INCORPORATED GALLIPLUS, OHIO 45631	
	RBV	5-17-95	1.5:1	DC		
UNTOLERANCED DIMENSIONS REFERENCE	CHK BY	DATE	DWG. SIZE	SERIES	CUSTOMER ECE CUSTOMER PART NO. & REVISION N/A	
	RLC	5-18-95	D	286		
MILLIMETERS						DWG. No. ESO286-34-014
THIRD ANGLE PROJECTION						

OUTLINE