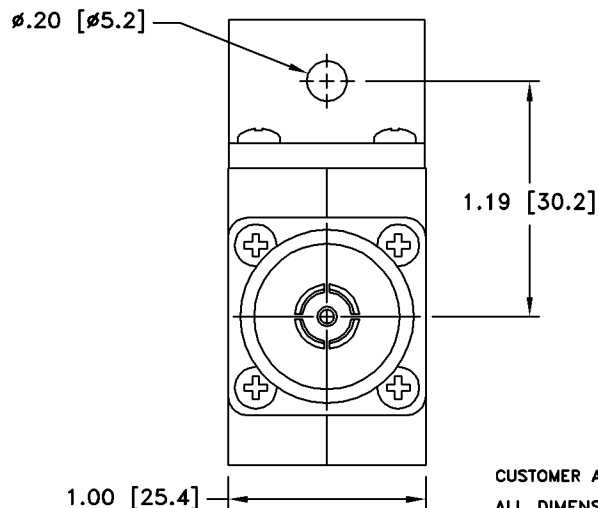
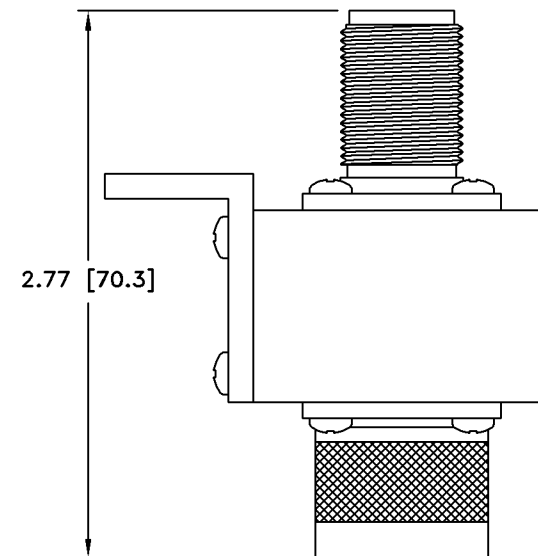
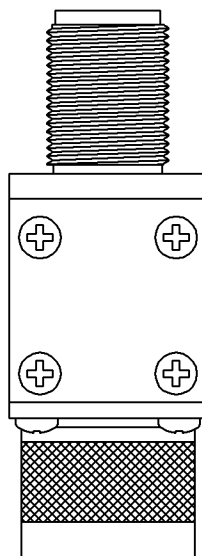
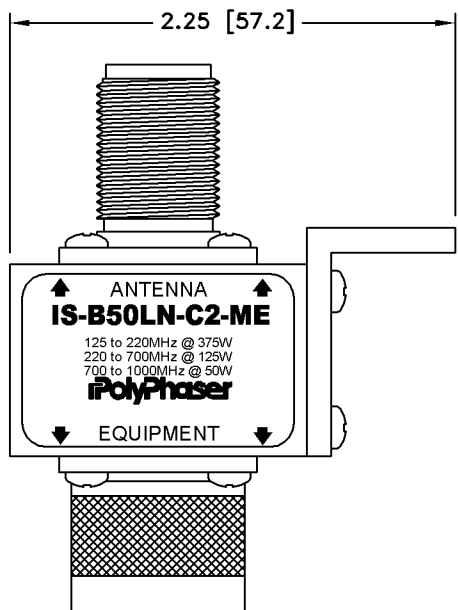


ALL DESIGN, OPERATIVE AND PROCESS DATA PERTAINING TO THE ARTICLE SHOWN ON THIS SHEET IS THE PROPERTY OF POLYPHASER CORPORATION. THE INFORMATION IS NOT TO BE COPIED, REPRODUCED, REVEALED TO OR APPROPRIATED BY OTHERS WITHOUT THE EXPRESS WRITTEN CONSENT OF POLYPHASER CORPORATION.

| REVISIONS |          |     |      |      |
|-----------|----------|-----|------|------|
| REV LTR   | DATE     | ENG | MKTG | Q.A. |
| E         | 03/08/07 | AD  | -    | -    |



### MAXIMUM CHARACTERISTICS

**SURGE:**  
50kA IEC 61000-4-5 8/20 $\mu$ s WAVEFORM 500 JOULES

**TURN-ON:**  
600Vdc  $\pm$ 20%

**TURN-ON TIME:**  
2.5ns FOR 2kV/ns

**FREQUENCY RANGE:**  
125MHz TO 1,000MHz

**VSWR:**  
 $\leq$ 1.1:1 OVER FREQUENCY RANGE

**INSERTION LOSS:**  
 $\leq$ 0.1dB OVER FREQUENCY RANGE

**THROUGHPUT ENERGY:**  
<220 $\mu$ J FOR 8/20 $\mu$ s WAVEFORM

**TEMPERATURE:**  
-45°C TO +85°C STORAGE/OPERATING +50°C

*These commodities or technology are exported from the U.S. in accordance with the Export Administration Regulations. Diversion contrary to U.S. law prohibited.*

CUSTOMER APPROVAL: \_\_\_\_\_ DATE: \_\_\_\_\_  
ALL DIMENSIONS SHOWN ABOVE ARE FOR REFERENCE ONLY.

|                              |                  |
|------------------------------|------------------|
| DRAFTER<br>J. CALLISTER      | DATE<br>06/17/96 |
| MECH ENGINEER<br>- - - -     | DATE<br>- - - -  |
| ELEC ENGINEER<br>T. KULBIEDA | DATE<br>06/20/96 |
| MARKETING<br>- - - -         | DATE<br>- - - -  |
| QUALITY DEPT<br>R. MATHEUS   | DATE<br>06/20/96 |

|                                                                                   |                  |              |                 |
|-----------------------------------------------------------------------------------|------------------|--------------|-----------------|
| <b>PolyPhaser</b>                                                                 |                  |              |                 |
| <small>P.O. BOX 9000 MINDEN, NV 89423 TEL: 775-782-2511 FAX: 775-782-4476</small> |                  |              |                 |
| <small>DWG NO/PART NO/DESCRIPTION</small>                                         |                  |              |                 |
| <b>IS-B50LN-C2-ME</b>                                                             |                  |              |                 |
| <b>CUSTOMER PRINT</b>                                                             |                  |              |                 |
| CAGE CODE<br>61114                                                                | FILE NAME<br>-C1 | SCALE<br>1/1 | SHEET<br>1 OF 1 |