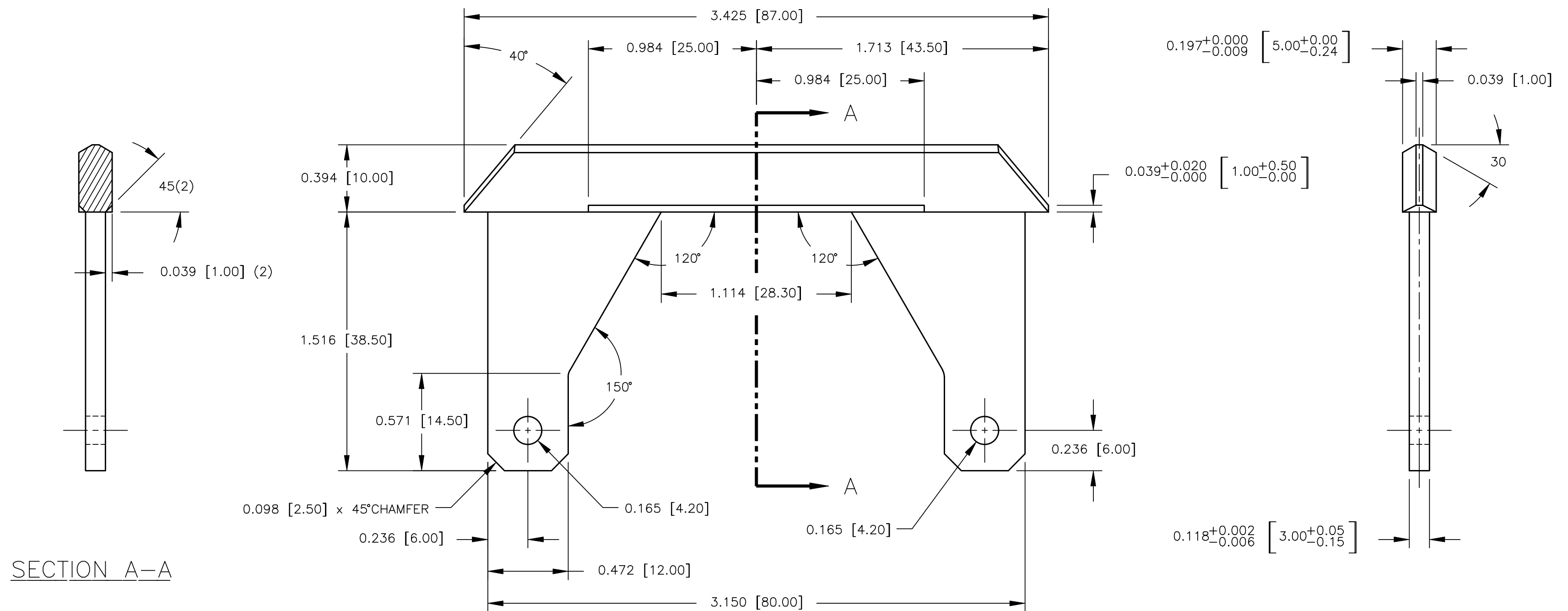


NOTES:

1. DIMENSIONS: INCHES [MILLIMETERS]

REV.	ECO NO.	REVISION DESCRIPTION	BY/DATE	APPD./DATE
0	20440	RELEASE FOR U.S.A. PRODUCTION		



ITEM	PART NO.	DESCRIPTION	QUANTITY
MATERIAL: COPPER GRAPHITE GRADE G257		BILL OF MATERIAL	
FINISH: MATERIAL P/N		PROD.: SL2	SALES NO.:
10102 F Sheet Conductix, Inc. 88127-1181 800-521-8888		DRAWING TITLE: SHOE, D.I. COLLECTOR	
UNLESS OTHERWISE SPECIFIED DIMENSIONS ARE IN INCHES TOLERANCES ARE AS FOLLOWS: DECIMAL ANG. FRAC. .1 = ±.008 ±1° ±1/16 .XX = ±.030 .XXX = ±.010 MINIMUM MACHINE SURFACE 250/		ENGINEER: J WILLIAMS 11/20/03	SCALE: 2X SHEET: 1 OF 1
This drawing and the information shown is unpublished confidential property of Conductix Inc. Subject to recall, and is loaned for use only in connection with the authorized manufacture or installation of Conductix Inc. products, and on the condition that it will be treated as confidential and will not be disclosed, published or reproduced in whole or in part or diverted to other uses, without specific written permission.		DRAWN: M SALAZAR 11/20/03	DWG. SIZE: C
		CHECKED: R BAUER 11/20/03	PART NO.: 45338
		APPROVED: K JENSEN 11/20/03	REV.: 0